



Electronic design

for a smarter world

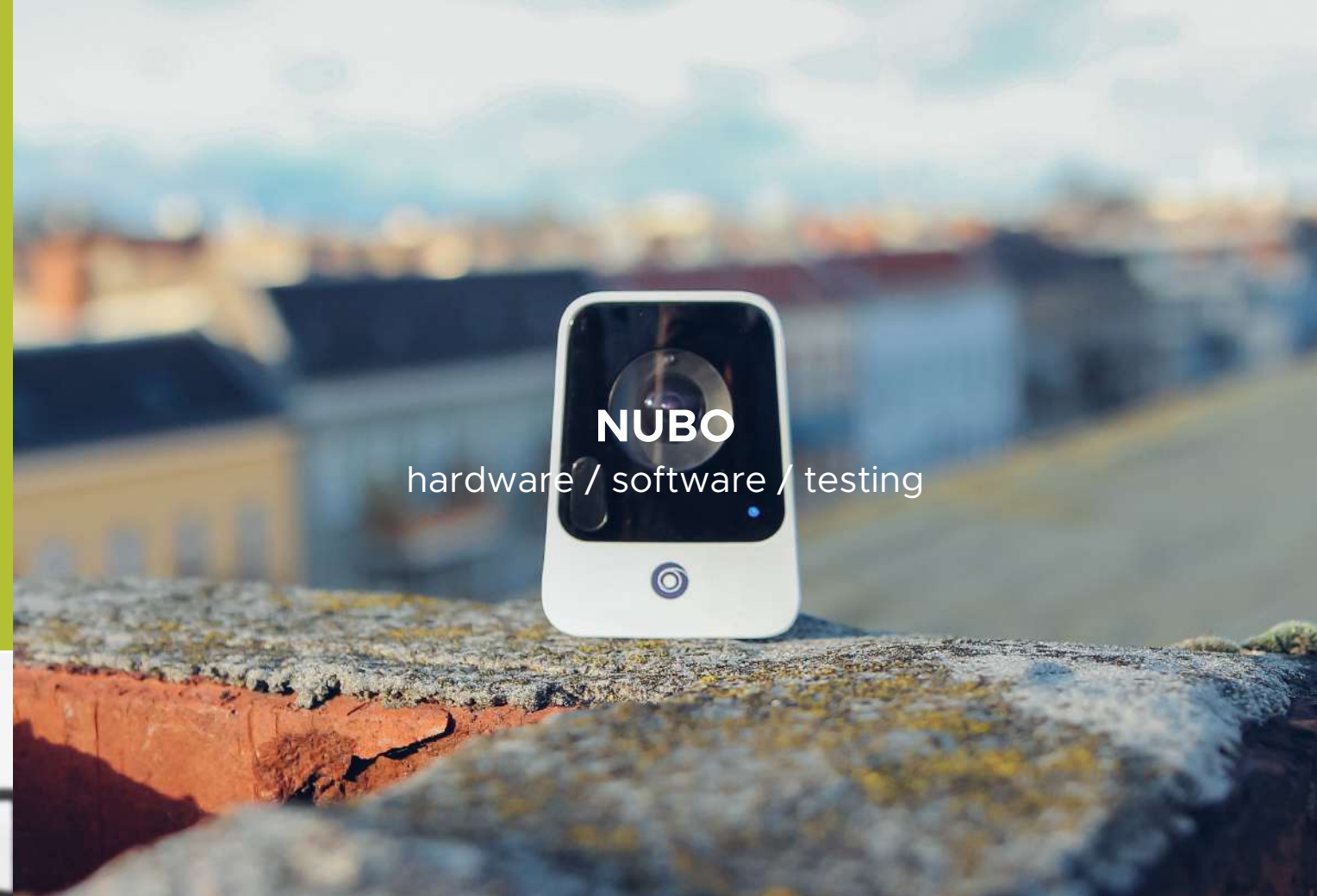
IOT SOLUTIONS, POWERED BY GRINN TECHNOLOGY



**This is just the
beginning**



**Nubo brings a new
level of security**



NUBO
hardware / software / testing

Get the freedom
to do what you want
while protecting
the things you love



The world's first 4G/LTE security camera;
Nubo provides low-cost, high-quality remote
monitoring, wherever you are.

optimize the core electronic hardware
and software.

We worked closely with the Eagle Eye
Networks team to design, develop, and

www.nubocam.com/en   



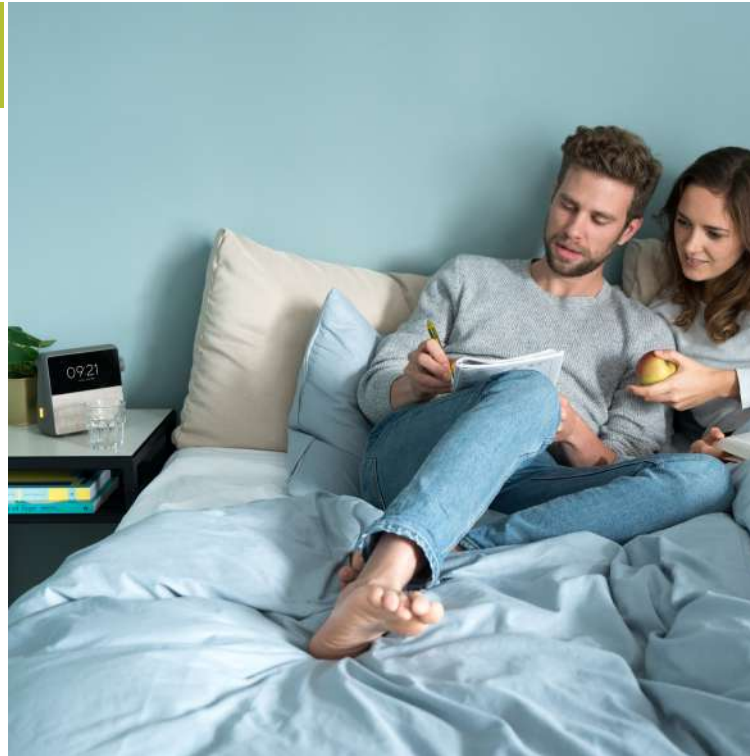
**Wake up to the
sleep revolution**



CIRCA

hardware / software / testing / production management

Circa helps you fall
asleep and gently
wakes you up
at the right moment



Sleep matters; that's why smart alarm clocks —which wake you up naturally and promote healthier sleep cycles—are increasingly popular. Circa is the best solution we've come across and it works without the usual smartphone controls.

Our input helped incorporate an internet radio and ensured that even tired hands easily can operate the touch screen and buttons.

www.getcirca.com



circa



**Stress-free
traveling is in the
bag with Versa**

Track your baggage
anywhere, check if it
was opened, and see
it arrive on the belt



VERSA

hardware / software / testing / production management



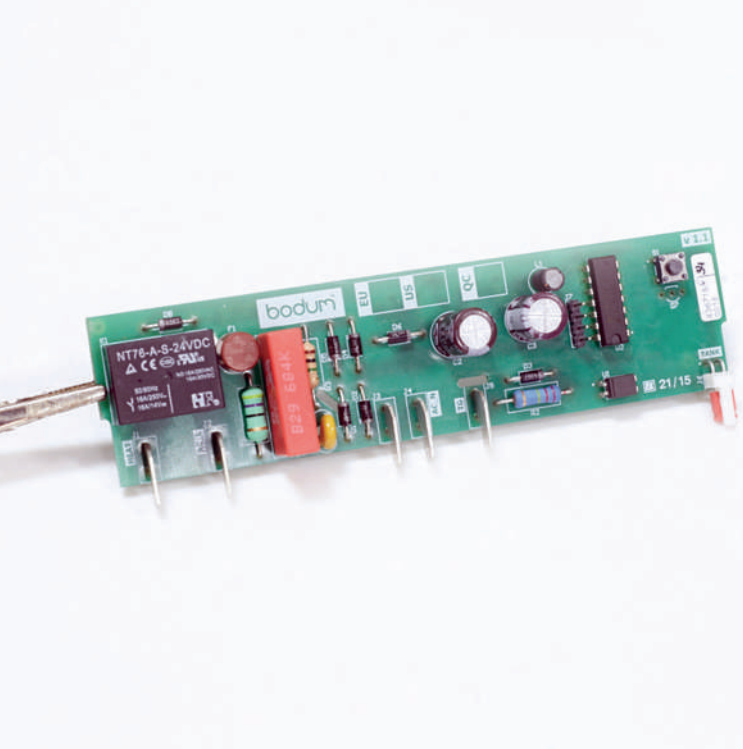
The most complete baggage tracking solution on the market. Simply place the Versa device in your bag and it tracks everything that happens while you are travelling—allowing you to relax and enjoy the ride. Grinn engineers prepared a concept of the device and created

electronic elements, embedded software, and secured communication between the device and the cloud.

www.versa.company.com

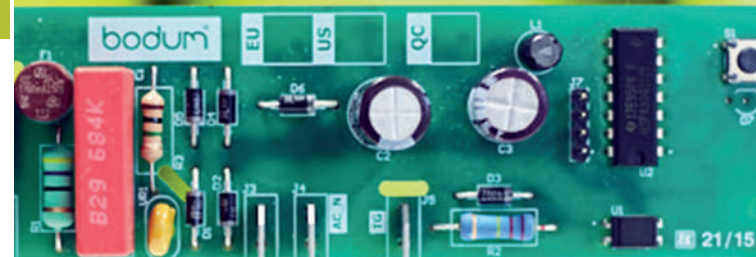


VERSA



The new standard
in coffee making.
Programmable
cafetiere for
the perfect cup
every time

We provided the core electronics to ensure the maximum intuitive functionality and high quality of the device. Making a great cup of coffee is an art from—we just added the science!




COFFEE MACHINE CONTROLLER

hardware / software / testing

An electronic control module for use in domestic appliances. Grinn is helping Hi-P address some key issues it had identified in its module—developing a low-cost, high-performance solution that is now mass-produced for use in a range of household products.

We ensure that a modern and functional device meets quality standards. The success is confirmed by the sale of an estimated 150,000 items per year.

www.hi-p.com 





**50% of infections
can be avoided by
improving hand
hygiene**

Saninudge
is a comprehensive
system for preventing
the transmission of
infectious diseases



SANINUDGE
hardware / software / testing

Our client devised Saninudge; a wireless, hand hygiene monitoring technology designed to help healthcare institutions improve and report compliance with hand hygiene guidelines. A revolutionary hand sanitizer for hospitals. We developed the electronics and software

to make the client's vision a reality and then oversaw full testing in complex environments.

www.saninudge.com

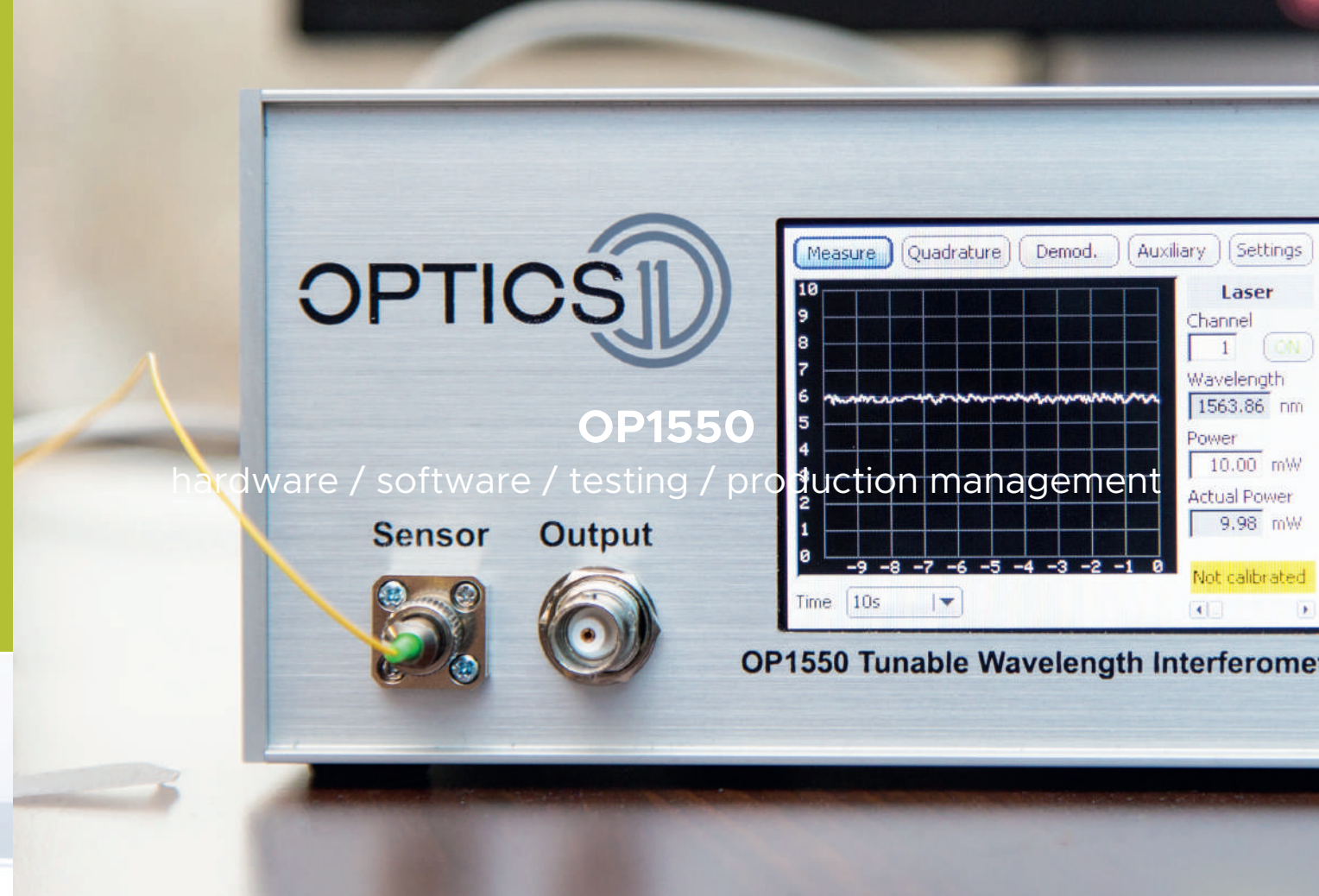


sani nudge



**Our customers
always love to
challenge us**

A user-friendly
device with a
wealth of possible
nanotechnology
applications



Together we created an industry-leading interferometer—a precision measurement tool used in specialized nanotechnology labs.

We designed and developed a complete solution around the client's sensor tool—for

the first concept to the final product—providing a PCB, visualization software, and device firmware.

www.optics11.com





**The buildings we
work in need to
be comfortable
and efficient**

Air humidity and
atmospheric pressure
measurement allows you
to optimize the workplace
temperature for your
people—and make them
more productive



AQM SENSOR

hardware / software / connectivity / testing
/ production management



The device provides a power supply for independent air quality monitoring. Sensors measure air temperature, humidity, pressure, and the level of suspended particles such as PM2.5 and PM10, VOC and CO₂. Data is transmitted via LoRa. It allows multiple

applications to integrate on the same network infrastructure. Checking air quality in a specific location becomes easy and instant.

www.grinn-global.com





**A wireless screen
sharing and
digital signage**



AIRTAME POE ADAPTER
hardware / testing

Device with cloud
management for
businesses and schools



As a proven creator of world-class solutions, we teamed up with Airtame – a company that is shaping the future of collaboration in workplaces in schools using the latest wireless technology. Together, we developed an accessory that secures a reliable wired

ethernet connection to the Airtame 2 - from which the wireless connectivity with collaborative devices is established.

www.airtame.com

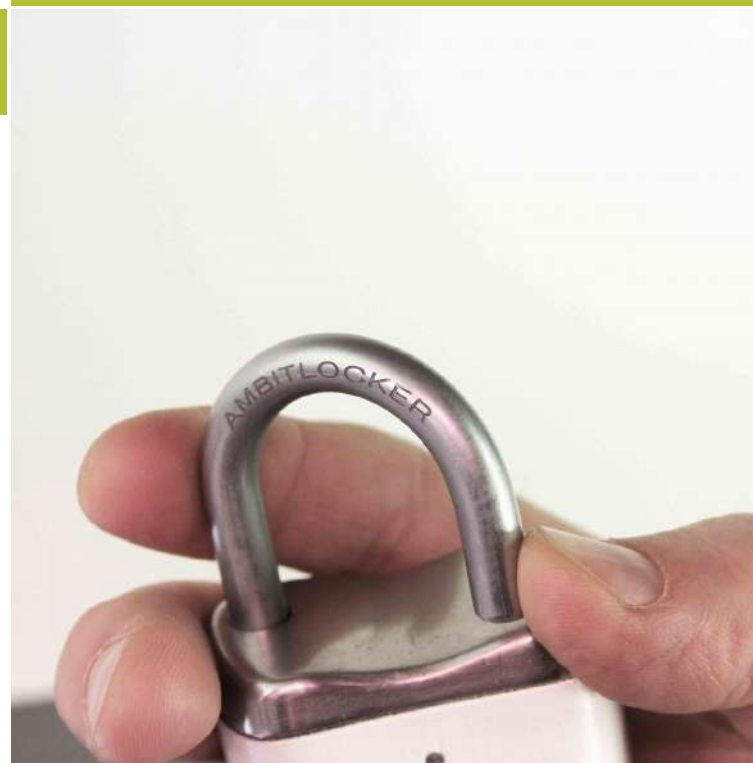


AIRTAME



**A digital,
radio-controlled
and Internet-
connected
IoT padlock**

Useful for a range of
end-users: from primary
school students to
hospital staff



AMBITLOCER
hardware / software / testing

During the Ambitlocker project, we used the most innovative, proven and high-performance radio technology LoRaWAN which is used in many other Grinn solutions. We were responsible for creating the hardware part of the Ambitlocker device - PCB design

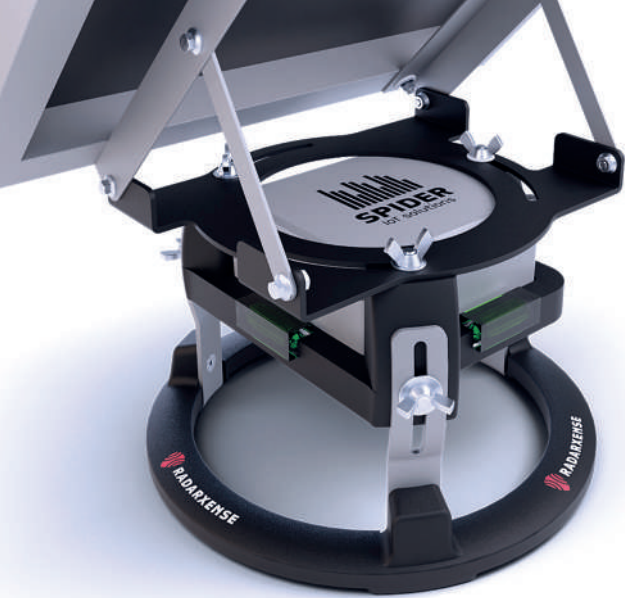
to compose the electronic factors
in a compressed and profitable way.

www.ambitlocker.com



AMBITLOCKER





Intelligent agriculture

The easy assembly
of solar panels to
power the solution
reduces running costs
to a minimum



SILO SPIDER

software / hardware



Silo Spider is built for durability and reliability. It is designed to cope with some of the most demanding weather conditions and make sure that the farm works all year round. Spider IoT Solutions called on Grinn engineers to manage and implement proper software and

hardware to run the latest radar technology combined with high quality IoT solutions.

www.spider-iot.net



**You're going to like
working with us**

OUR CLIENTS



OUR PARTNERS



LET'S GET STARTED

Our team of consultants, designers and engineers is ready to get started on your project. With a flair for problem-solving, a global outlook and a flexible approach, we're committed to delivering outstanding solutions fast.

e-mail: office@grinn-global.com

call: +48 71 716 40 99

www.grinn-global.com

